



Select from a full range of artist supplies at the

artSparx Store

artSparx helps you create your style...NOW!



HOME DECOR

ARTISTS

MEMBERS

SITE MAP

STYLE

TOOLS

TUTORIALS

ART STORE

COMMUNITY

ABOUT US

SEARCH

log in

log out

FEATURES

WHERE ART AND DESIGN MERGE



Hand painted Delft tiles

Rating 3.5 - moderate



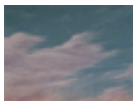
The loose, un-even quality to these tiles makes painted Delft tiles an ideal technique for the beginner or inexperienced do-it-yourselfer. Irregular lines, loose hand painted renderings add character and old world charm, easily achieved without any prior painting experience.



[Marbleizing](#)

- 

Create this bold Ochre marble effect like a professional!



[Painting Sky Murals](#)

Cloud and sky paintings can be a simple representation or an elaborate painted affair. Learn how to create your own.

[more decorative techniques.](#)

For use on walls, furniture, and objects.

Delft tiles, originating in the 1500's in Holland, are beautiful hand painted ceramic tiles. The classic motifs, such as landscapes, flowers, animals and sea faring images, are hand painted using a wonderful blue glaze. Though full color tiles are available, the word Delft has become synonymous with white and blue ceramic tiles.

In this tutorial you will learn to create and paint these classic tiles, ideal suited for back splashes, decorative trays and objects, fire place surrounds, or just about anywhere you want to add a splash of old world charm.



featuring the
3 step color **Scheme** system



materials

Delft tiles	
▶	Artist Acrylic Paints Raw Umber Cobalt Blue
▶	Painters tape
▶	paper palette
▶	Artist Red Sable No. 6 brush
▶	Tape measure
▶	Level
▶	Water
▶	Floetrol
▶	rags
▶	Brushes (3 to 5 inch)
▶	pencil
▶	Water based paint White -eggshell sheen
▶	Drop Cloths

? Ask artSparx

Featured Products

For pattern inspiration, we suggest you visit the [Delft web site](#) and choose a motif that inspires you.

Preparing the surface

Once you have chosen where you would like to paint your Delft tile motifs make sure you have prepared the surface for painting. If the painting area requires touch-ups, filling or repainting, follow the next 2 steps. If your wall surface has a suitable layer of white or slightly off white paint in an eggshell, satin or semi-gloss sheen that is in good condition, [skip to step 3](#).

Step 1: Remove all nails and repair any damaged or cracked areas. [Prime](#) as needed. Refer to the [artSparx basic preparation](#) resource for tips and techniques.

Step 2: Apply a white Latex Eggshell paint finish, such as Benjamin Moore Antique White, or Pratt and Lambert Designers White.

Note You may want to paint a different color tone above the 'Delft tiles' to differentiate the area. If this is the case, you may want to only paint the area that will have the Delft motif with the Eggshell white paint. However, painting the entire wall will provide excellent results.

Choosing where to paint

For the artSparx tutorial we have chosen to paint a kitchen back-splash with our Delft motif.



An ordinary, rather simple kitchen area.

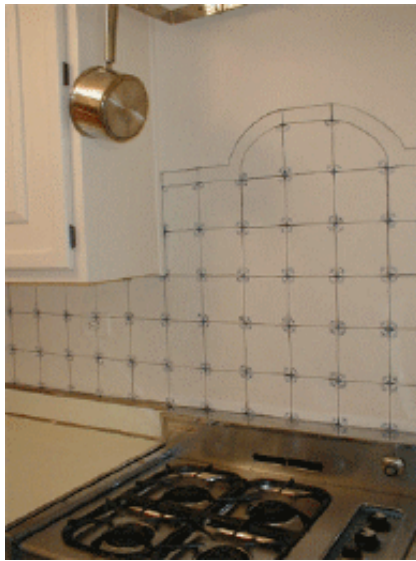


.The completed outlines of our tile layout



Deco Art Americana Acrylic Paints 2 oz. bottle oyster pearl metallic

All-purpose, professional artist quality, highly pigmented waterbased acrylic for decorative artists and general craft use. Excellent for stenciling, home decor and fabric painting. Use on wood, fabric, walls, canvas, metal paper, ceramic bisque, leather, etc. Opaque colors cover in one coat. Intermixable and permanent, soap and water cleanup. Available in 2 oz. and 8 oz. bottles.



Corner details and base glaze completed.



Randomly placed decorative 'ship' vignettes finish off the effect.

Creating your color palette

Step 3: Creating the color palette for Delft blue is very simple. The color scheme for the entire project only requires 2 colors, **Cobalt Blue** and **Raw Umber** [acrylic artist paints](#).



Floetrol® Latex Paint Conditioner: Quart

Flood

Add to latex paints to improve flow and cover qualities.

SKU: 770817

\$5.49



what's new

More techniques

- ▶ [Color washing](#)
- ▶ [Glazing techniques](#)
- ▶ [Rag rolling](#)
- ▶ [Sponging](#)
- ▶ [Marbleizing](#)
- ▶ [Wood graining](#)
- ▶ [Stippling](#)
- ▶ [Striee glazing](#)
- ▶ [Dragging techniques](#)
- ▶ [Pouncing techniques](#)



A [paper palette](#), tape measure or ruler, level, pencil and [artist brushes](#) are all the tools you'll need.

Mapping out the pattern and first painting

Step 4: Typically Delft tiles are 6 inch squares. Measure the working

- ▶ [Style archives](#)
- ▶ [Preparation of surfaces](#)
- ▶ [Know your materials](#)

skill levels

artSparx rating system

Designed to help you determine the difficulty and skill level any individual painting technique may represent

Rating: From 1 to 5

- 1- Beginner, *easy*
- 2- Apprentice, *moderate*
- 3- Glazer, *mod.-difficult*
- 4- Artist, *difficult*
- 5- Master, *very difficult*

space and divide by 6. If you get an even number, perfect. If not, then play around with the size slightly. Try 5 3/4 inch, or 6 1/4 inch, etc.

Note It's OK if your tiles don't fit perfectly. If you were to install genuine tiles you would not have the flexibility you have with the painted motifs and the real tiles would fall 'where ever they will'.



Using your tape measure, mark off your tile sizes with a pencil. First create the horizontal marks, then finish with the vertical reference points.

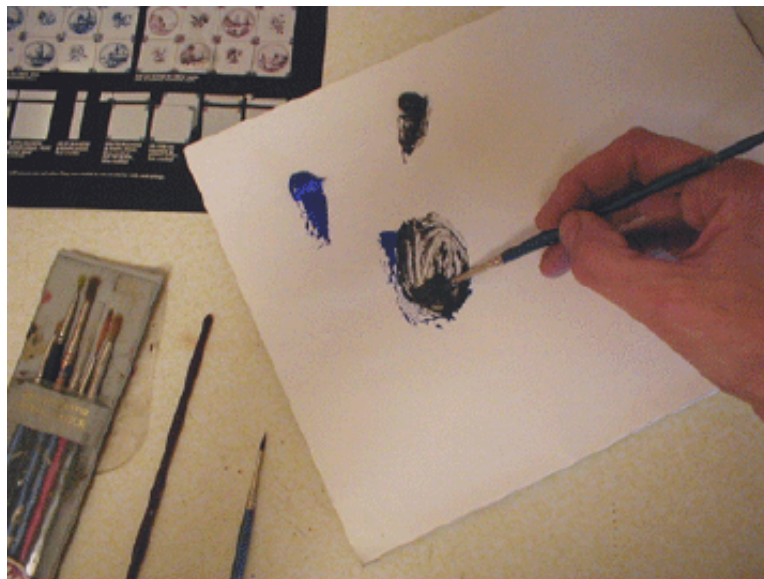


Using your pencil and level, connect the 'guide' lines and draw out your grid pattern. This will be the base for the tile edges.

More Techniques!

- ▶ [Color mixing recipes](#)
- ▶ [artSparx Color Learning Center](#)
- ▶ [Color washing - Oil glaze method](#)
- ▶ [More decorative paint and glazing techniques](#)

Step 5: Begin painting the tile edges. On your paint palette, mix Raw Umber with Cobalt Blue in approximately equal proportions. This will create a 'black' tone.



Detail of color washed wall surface.

Use a number 6 artist brush and paint over the grid lines you created with your pencil. A loose, slightly irregular application is desirable, therefore, simply paint over the pencil lines without attempting to create exacting lines.

**artSparx Special
Painters' tape**



BUY

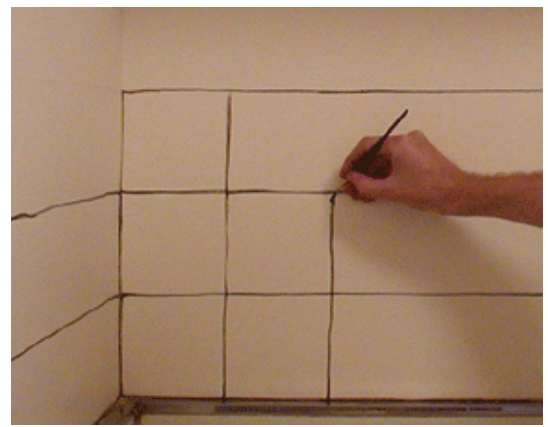
**Scotch Safe-Release
Painters' Masking Tape**

3M No. 2080-1 & 2080-2 Safe-Release blue painters' masking tape is the most versatile tape on the market.

SKU: 798204 \$5.49



Completing the pencil line pattern



Creating the tile lines with your No. 6 artists brush.



**Silver Brush
Renaissance Series
7120S Shader Red
Sable Brush**

Finest quality pure red sable from selected marten tails creates a range of superb sable brushes with a natural spring and generous color holding. Hair is carefully hand cupped, individually tied into bundles, then set by experienced brushmakers into seamless goldtone ferrules. Gloss black hardwood handles have gold tips.

size 0 \$ 4.03	size 5 \$ 6.11	size 8 \$ 9.70
size 2 \$ 4.66	size 6 \$ 6.55	size 10 \$ 13.67
size 4 \$ 5.29	size 7 \$ 8.44	size 12 \$ 16.82

Adding corners and the illusion of tile dimension

Step 6: Once you have completed painting the overall line pattern you will return to add 'corners and edges'. Using the same 'black' paint you have mixed using the Raw Umber and Cobalt Blue, rework the lines by adding a horizontal and vertical line only where the grid lines intersect. Essentially you are making a + at each corner. These irregular corners create the illusion of depth and help imply the hand made nature of each individual Delft tile.



Adding more lines just at the corners of each 'tile'

Antiquing and glazing the surface

Step 7: You can now proceed with the antiquing of the Delft tiles,

quick tip

Sanding Tip:

You can reduce the grit (or coarseness) of any sandpaper by rubbing two pieces together, face-to-face. For example, rubbing 2 pieces of 120 grit sandpaper together will abrade each surface to produce the rough equivalent of 180 grit sandpaper. This will be slightly irregular however, so be attentive to item being sanded.

Step-by-Step Feature



Hand-painted Delft tiles

The loose un-even quality of this faux technique makes painted Delft tiles an ideal decorative effect for the beginner or inexperienced do-it-yourselfer.

Irregular lines and hand painted renderings add character and old world charm, easily achieved without any prior painting experience.

[more decorative treatments](#)

creating the porcelain glazed appearance that the original ceramic tiles achieve after firing in the tile makers kiln.

Working in one area at a time, mix Cobalt Blue with a small amount of Raw Umber, creating a blue-grey tone. Mix with [floetrol](#), latex glazing liquid or scumble glaze (all work equally well) to create a fluid, pale glaze and brush on a loose film over the entire 'tiled' surface.



With the blue-grey glaze still wet, soften and blot the surface with a dry, clean cotton rag. This will create a slightly irregular 'rag' texture. This effect should be soft and subtle, so keep blotting and 'ragging' the area until you have created a soft mottled appearance.



Ragging the antique glaze, creating a glazed ceramic impression.

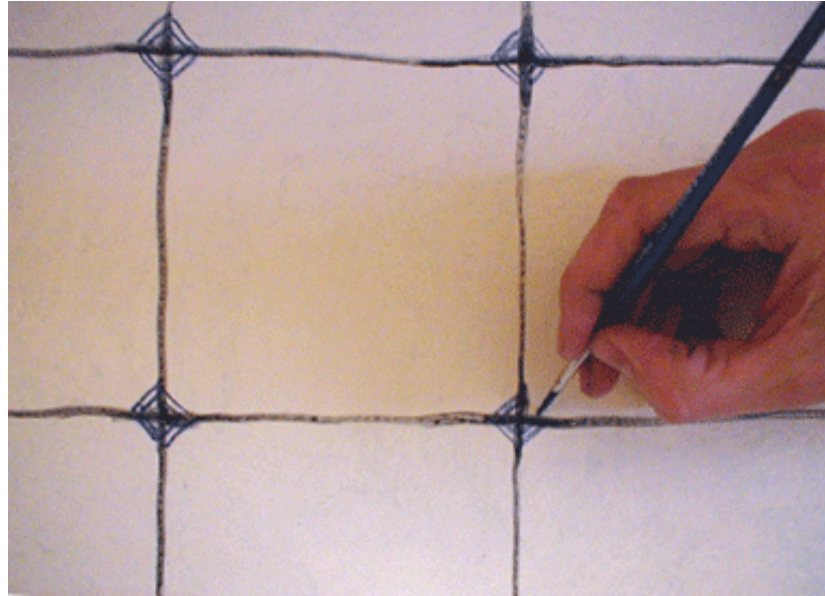
"Poetry is superior to painting in the presentation of words, and painting is superior to poetry in the presentation of facts"

Leonardo da Vinci 1452-1519

Adding painted details

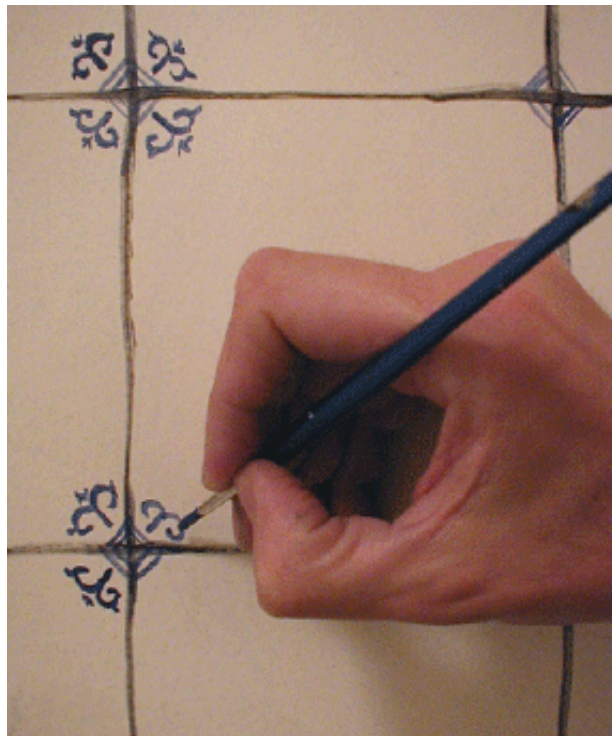
The classic Delft tiles are quite simple. The classic white tiles have corner details, with the occasionally painted motif randomly placed throughout the design.

Step 8: Painting the corner details. On your palette mix Cobalt Blue with a touch of Raw Umber, just enough to darken the blue slightly. From this point onward your 'blue' should be just that, primarily blue. Paint the detail elements in the following manner...



Create 2 diagonal straight lines at each corner. Once you have done a few 'tiles' you will see that a 2 lined diamond shape is created in each corner.

Don't be fussy, irregularity adds charm and character.



Next, add the curly motif to each corner.



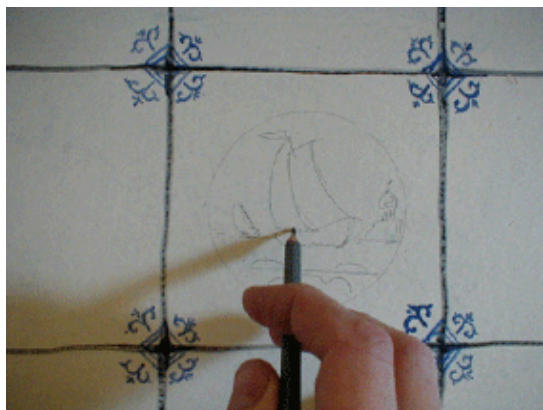
Painting the corner motifs completes the primary impression of your Delft tile pattern.

Painting decorative vignettes

Step 9: Once you have chosen a detail motif you want in your Delft tile pattern you are ready to start painting. Select a pattern from an existing tile or visit the [Delft web site](http://www.delftweb.com) for inspiration. Choose random

tiles to add your landscape, animal, flower, etc. motif. There should be one painted motif to every 5 - 10 tiles. Stand back and look at your tile pattern to get a 'feel' for where the motifs should be placed. If you are nervous, start with a few and add more as you go...

You can either free-hand the sketch onto the tile area or transfer a pattern. To learn how to [transfer a pattern](#) click here.



Sketch a pattern with a pencil
or [transfer your pattern](#)

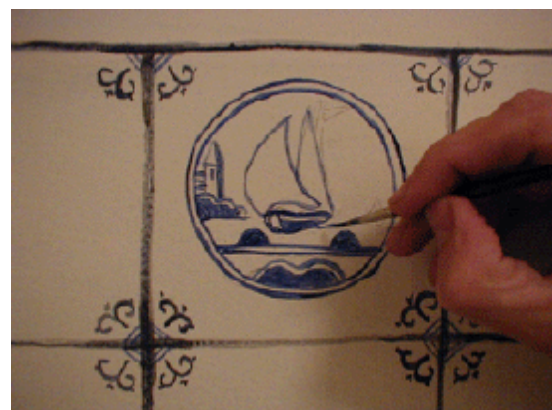


Painting the motif

The color you will paint your pattern in is the same blue you used to paint the corner motifs with, Cobalt Blue with a dash of Raw Umber.



Outline the shapes



Filling in solid areas



Washing on color for the background.

Simply dilute your paint with water to create the soft, watery effect of the background clouds.

Follow the pattern you have chosen. Don't worry about being too literal. The technique should be fun and loose. It is the overall **feeling** of the tiles together that creates the final, lasting impression.



A completed tile!



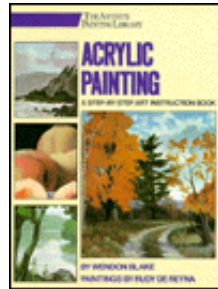
Decorative tiles are painted randomly, every 5 to 10 tiles apart.

Applying a protective varnish coat

Step 10: To protect the surface, a water-based varnish, such as **latex varnish**, may be applied after the painted surfaces have dried completely (4-6 hrs). For wall surfaces it is recommended to use a low-lustre or Satin sheen finish.

Step 11: [Clean](#) up with warm, soapy water.

artSparx Book special



[Acrylic Painting: A Step-By-Step Art Instruction Book](#)

The qualities of acrylic paint and its basic techniques are discussed. Covers opaque, transparent, scumbling, and drybrush plus how to combine them with acrylic techniques.

[more books](#)

[Interior Style design features](#)

[Have a question? Ask artSparx](#)

[More decorative paint and glazing techniques](#)

[Home Decor](#) • [Artists](#) • [Members](#) • [Store](#) • [Site Map](#)

Join the artSparx community! Become a [registered member](#) now.

contact@artsparx.com

Capture your target market!

Advertise at artSparx and reach over 100,000 unique visitors per month!

[more info](#)

[Become a link partner](#)

[Add features to your site! Free](#)

[Media Support Center](#)

Copyright 2001-2004 artSparx.com. Except as otherwise expressly permitted under law, no copying, redistribution, retransmission, publication or commercial exploitation of material or concept are permitted without the express written permission of artSparx.com and Copyright owner. [legal](#)

San Francisco, Ca. 415.407.5097

